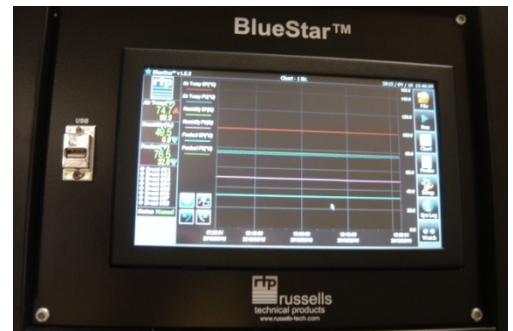




BlueStar™

COLOR TOUCH SCREEN CONTROLLER

Russells **BlueStar™** color touch screen controller is a powerful state of the art chamber controller/microprocessor that makes programming your test chamber a breeze. Take control of your Russells chamber with a touch of the finger. **BlueStar™** is packed with features that you would not find on other touch controllers.



BlueStar™ features:

- 8.0" WSVGA TFT touch panel PC
- Intuitive touch functionality
- High performance 32 bit dual core microprocessor
- 4 channels of control
- Product temperature control
- Fully configurable trend graph displays up to 8 user defined processes
- Data logging of up to 32 user defined processes automatically for 30 days
- Displayed data can be exported as .csv file via front panel USB
- Inputs for chamber system monitor and preventative maintenance
- Remote ethernet/RS-232 communications
- Server enabled remote control from Lab View or other custom programs
- Easily retrofitted to most existing chambers
- Password protection for multiple users

Let BlueStar™ be the star of your lab!



technical products

SPECIFICATIONS

CHANNELS:

4 Process Variables

PRODUCT TEMPERATURE CONTROL:

Yes

OPERATING SYSTEM:

Windows 32 bit (Windows Embedded)

PROCESSOR:

Intel Dual Core Atom Processor

DISPLAY:

8.9" WSVGA TFT touch panel PC
LED backlight
Fanless

RESOLUTION:

1024 x600, 256K

STORAGE:

4GB Solid State Hard Drive

COMMUNICATIONS:

10/100 Ethernet Via RJ-45, RS-232

USB:

(1) 2.0 For Data Transfer

POWER REQUIREMENTS:

In: 100-250 VDC/47-64 HZ

Out: 12V AC/5a (60W)

OPERATING TEMPERATURE:

-10°C(14°F) to 60°C(140°F)

10% to 95% RH @40°C Non-Condensing

COMPLIANCE:

CE

OPERATING MODES:

Stop, Manual, Profile, Soak, Ramp, Loop, Next Profile, Wait.

PROGRAM CAPACITY:

999 Loops

Program On The Fly

DATA LOGGING:

Logs 32 channels

(8) User Definable for Trending Graph and Exporting
30 second intervals

GRAPHICAL TRENDING:

Program and Process Data
Real Time Up To 30 Days

ANALOG INPUTS: (8)

Expandable to 16

+/-10V

+/-20mA

4-20mA

T,J, or K type Thermocouples

Optional: RTD (PT100)

ANALOG OUTPUTS: (Optional)

+/-10V

0-20mA

DIGITAL INPUTS: (16 depending on config.)

24VDC

DIGITAL OUTPUTS: (16 depending on config.)

Contact: 2A Max. Resistive, 80VA Inductive

PROFILE DELAY START:

1-999 hours

ALARMS:

32 User Definable w/History