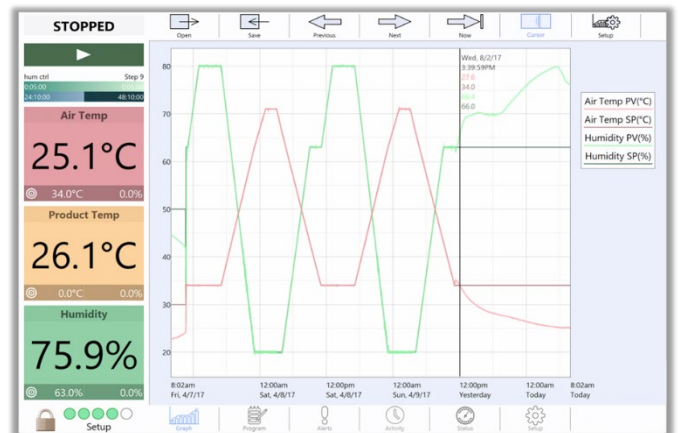


russellsOne

COLOR TOUCH SCREEN CONTROLLER

The russellsOne color touch screen controller is the most powerful state of the art chamber controller/microprocessor available. Simple user interface with powerful data collection gives this controller faster screen access, powerful programming, and more flexibility than any controller on the market. Programming profiles and downloading test data are easily accomplished on a 15.6" color touchscreen display.



KEY FEATURES:

- 15.6" PCAP Touchscreen Display, 1920 x 1080
- Intel Quad Core Processor (Windows 10 IoT Ent) 128GB SSD
- 4 channels of PID control w/product temperature control (up to 8 by request)
- Dual 1 GB Ethernet via RF-45
- User definable graphical trending & real-time data processing
- Data logging of up to 64 analog inputs (optional) with virtual unlimited file storage
- Data exported as .csv or .png image
- Up to 64 configurable digital inputs & outputs
- Settings for chamber systems monitor and preventative maintenance
- Server enabled remote control from Lab View or other custom programs
- Multiple mounting options
- Easily retrofitted to most existing chambers
- Password protection for multiple users
- Alarm fault warning notifications via email or SMS text



SPECIFICATIONS

CHANNELS:

4 Process Variables

PRODUCT TEMPERATURE CONTROL:

Yes

OPERATING SYSTEM:

Windows 10 IoT Ent

PROCESSOR:

Intel Quad Core Processor

DISPLAY:

15.6", 1920 x 1080 Full HD
PCAP Touchscreen Display

STORAGE:

128GB SSD

COMMUNICATIONS:

Dual 1GB Ethernet
Via RJ-45

USB:

(1) 3.0 + (1) 2.0

OPERATING TEMPERATURE:

5°C(41°F) to 40°C(104°F)
8% to 85% RH @40°C Non-Condensing

COMPLIANCE:

CE

ACTIVITY LOG:

Logs Basic Events

OPERATING MODES:

Stop, Manual, Profile, Guaranteed Soak, Ramp, Loop,
Wait.

PROGRAM CAPACITY:

999 Loops
Program On The Fly

DATA LOGGING:

Logs 8 channels (up to 64 optional)
User Definable for Trending Graph and Exporting
(1 second intervals)
"Always On" data logging

GRAPHICAL TRENDING:

Program and Process Data
Real Time

ANALOG INPUTS:

64 Including Inputs Used By System
+/-10V
+/-20mA
4-20mA
T,J, or K type Thermocouples
Optional: RTD (PT100)

ANALOG OUTPUTS: (Optional)

+/-10V
0-20mA

DIGITAL INPUTS: (32 depending on config.)

24VDC

DIGITAL OUTPUTS: (32 depending on config.)

Contact: 2A Max. Resistive, 80VA Inductive

PROFILE DELAY START:

1-999 hours

ALARMS:

32 User Definable w/History